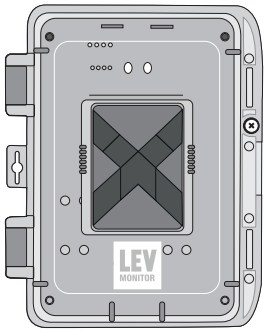


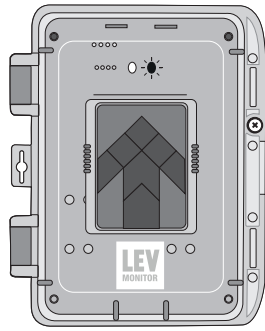
Indication Key:

Calibration Required



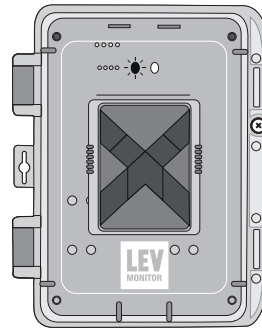
No LED
Solid Cross

LEV System Running Correctly



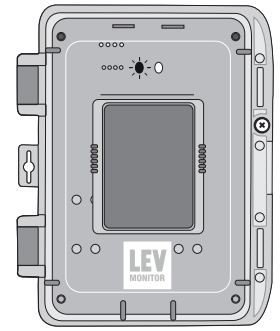
Green LED every 10 sec
Scrolling Arrow

LEV System Fail



Red LED every 10 sec
Flashing X

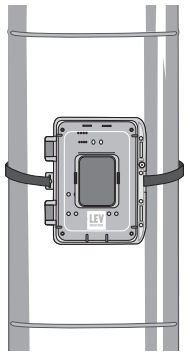
LEV System Maintenance Required



Red LED every 5 sec
No Display

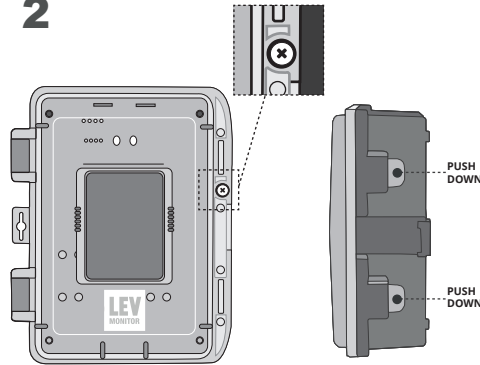
LEV MONITOR Calibration Instructions

1



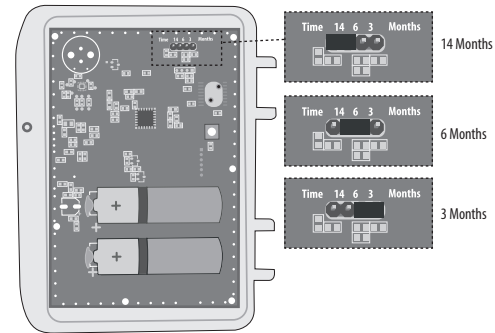
Prior to calibration the LEV system should be correctly balanced by a competent engineer.

2



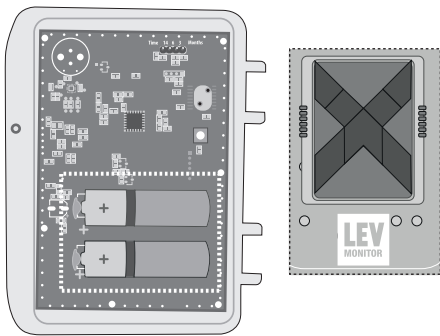
Remove the door securing screw and apply pressure to both of the clips to release the door.

3



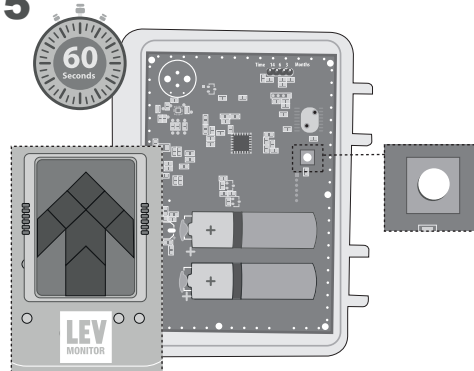
Move the jumper link to select the system maintenance indicator (3, 6 or 14 months).

4



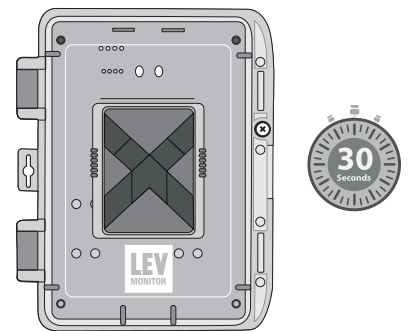
Once the system is balanced and the timer set, insert the batteries (please check polarities). The LCD will then display a solid Cross.

5



Leave for 60 seconds to stabilise. Press and hold calibrate button until the LCD displays an Arrow. If calibration fails the red LED will flash.

6



Once calibrated, the LEV system should be switched off and a flashing Cross will display within 30 seconds.

Warnings

- The batteries **MUST** be replaced during each inspection visit (14 Months Maximum).
- The LEV system installation/specification must be verified by a competent engineer prior to any balancing works taking place.
- Prior to calibration taking place, checks shall be made to ensure each individual extraction point meets the minimum requirements outlined in HSG258.